



4K UHD MINI-DOME CAMERA

Ariel™ 4K Mini-Dome

The Ariel™ 4K UHD Dome easily handles diverse motion and lighting conditions found in critical infrastructure and commercial locations. The camera includes Shutter Wide Dynamic Range, IR Illumination and H.264/H.265 compression. The Ariel 4K UHD Dome reduces the total cost of ownership through network and storage savings. When controlled using FLIR's United VMS, the camera also utilizes unique adaptive streaming technology, enhancing the overall viewing experience.

www.flir.com/security



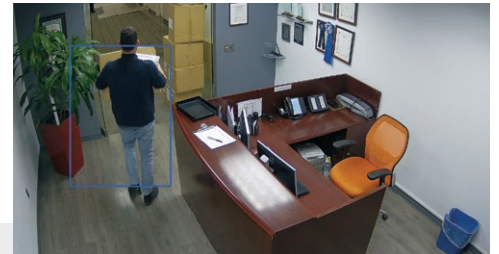
LATEST SENSOR TECHNOLOGY

Features include 4K UHD resolution, Shutter Wide Dynamic Range, and H.264/H.265 compression.



TRUE DAY/NIGHT COVERAGE

Low light sensitivity at 0.07 Lux (color), 0.01 Lux (BW), and 0 Lux with IR illumination.



BUILT-IN ANALYTICS

The camera offers a package of basic video analytics capabilities including Border Line, Counting, Area Protection, Loitering, Object Dropped and Object Removed.

SPECIFICATIONS

Camera	
Image Sensor	1/2.5" BSI CMOS
Sensor Resolution	3840 x 2160
Scanning Mode	Progressive
Sensitivity	0.07 (color)/0.01 (BW), 0 Lux with IR illuminator ON, measured at 30 IRE
Lens Type	Varifocal 3.4-9mm, 42°- 104° HFOV, F1.5, D/N, motorized auto-focus / auto-iris, P-Iris
Automatic Electronic Shutter (AES)	1/1.75 to 1/10,000 (auto)
Digital Slow Shutter (DSS)	1/7.5(6.25)-1/60(50) NTSC(PAL)
White Balance	Auto / ATW / Manual / One Push
Automatic Gain Control (AGC)	Auto
Back Light Compensation	On / Off
Shutter WDR	120 dB
Noise Reduction	3D
Tamper Detection	Yes
Privacy Zones	Yes
Video Motion Detection	Yes
General Purpose Video Analytics*	Border Line, Counting, Area Protection, Loitering, Object Dropped, Object Removed
Day / Night Mode	Yes, support for Enhanced Low Light performance
Mechanical IR Cut Filter	Yes
Signal to Noise Ratio (SNR)	±50 dB
Video	
Compression	Enhanced H.265 Main Profile + Enhanced H.264 Main/High/Baseline Profile + MJPEG
Maximum Performance	H.264/H.265 30/25 FPS @ 4K (NTSC/PAL) or H.264/H.265 15/12 FPS @ 4K + 1080P + D1 (NTSC/PAL) or H.264/H.265 60/50 FPS @ 1080P + 30/25 FPS @ 720P + D1 (NTSC/PAL)
Resolution Range	Scalable from D1 to 4K
Bandwidth	Configurable between 64Kbps and 20Mbps
Rate Control	CBR, CVBR, MJPEG
SD Card Recording ¹	microSDXC up to 128GB (Class 10)
IR Illuminator	
Distance	Up to 30m (98 ft.)
Angle of Illumination	Full 60°
LED Type	High efficiency SMD
Peak Emission Wavelength (nm)	850

Network	
Network Protocols	TCP, UDP, ICMP, HTTP, HTTPS, FTP, DHCP, DNS, DDNS, RTP, RTSP, RTCP, PPPoE, NTP, UPnP, SMTP, SNMP, IGMP, 802.1X, QoS, IPv4, IPv6, SSL, LDAP
Ethernet	10/100, IEEE 802.3, auto sensing 1 x RJ45
Remote Configuration	Via web browser or supported video management software
Firmware Upgrade	Flash memory for upgrade of camera firmware over the network
Supported Web Browser	Internet Explorer 10+, Firefox 50+, Chrome 55+
Security	Password protection, IP address filtering, HTTPS encryption, IEEE 802.1X network access control, Digest authentication

Audio	
Bi-Directional Audio	1 Audio Line Input, G.711 a/μ-law, AAC support + 1 Audio Line Output

Alarm	
Input	1 dry alarm contact
Output	1 Relay Contact

Physical	
Enclosure	Indoor/Outdoor: IK10 rated vandal IP67
Dimensions	138 x 104 mm (5.43 x 4.09 in.)
Unit Weight	0.82kg (1.8 lbs.)

Mechanical	
Bubble F-Stop	F0.0 - clear
Pan / Tilt	360° / ±80°
Electrical	
Input Voltage	802.3af PoE
Power Consumption	8W / 12W with heater and IR
Power Connector	RJ45

Environmental	
Operating Temperature	-40°C to 50°C (-40°F to 122°F)
Storage Temperature	-40°C to 60°C (-40°F to 140°F)
Humidity	90% (non-condensing)

Warranty & Regulatory	
Warranty	According to FLIR RMA Policy and Process Notice document
USA	UL, FCC Part 15 (subpart B, class A)
International	CE marked, EN61000-6-3 & EN50130-4, RoHS, RCM
MTBF (hrs)	346,896

* Requires license activation: part number TBD. Single active rule at any time. Requires license purchased separately.
¹ Excluding countries where disallowed.

Camera Ordering Information

Type	Series	Camera Resolution	Lens Options	Environmental	IR Illuminator
CM	XX	XX	X	X	I
Mini-dome Camera	33 = Ariel Gen III	04 = Quad HD 3840 x 2160	1 = 3.4-9mm	1 = IP67 Vandal with Heater	1 = 60° Illuminator

Mounting Options

CM-CAPX-31	Pendant Cap for CM-31xx Series and CM-33xx Series
CX-ARMX-G3	Wall mount bracket 1.5" NPT (m) threaded
CM-4S-31	4S Mounting Adapter for CM-31xx and CM-33 Series
CM-BKBX-31	Back Box for CM-31xx and CM-33xx Series
CX-POLE-G3	Pole Adapter for Cx-xxxx-G3 mounts including 2.5" - 8.5" straps
CX-ELBX-G3	Wall mount bracket 1.5" NPT (m) threaded with IP68 electrical box enclosure
CM-RCSD-G2	Recessed Kit for CM-31xx, CM-33xx, and CM-62XX Series Mini-dome Cameras
CX-GSNK-G3	Goose-neck mount 1.5" NPT (m) threaded with IP68 electrical box enclosure
CX-CRNR-G3	90° Exterior Angle corner adapter for Cx-xxxx-G3 mounts

Specifications are subject to change without notice. For the most up-to-date specs, go to www.flir.com



CORPORATE HEADQUARTERS

27700 SW Parkway Ave.
 Wilsonville, OR 97070
 PH: +1 877.773.3547

FLIR SECURITY SYSTEMS, INC.

65 Challenger Rd, Suite 201
 Ridgefield Park, NJ 07660
 PH: +1 201.368.9700

FLIR UK

7 Lancaster Court
 High Wycombe, HP 123td
 PH + 44 (0) 1494.430248
 F + 44 (0) 1494.446928

FLIR MEXICO

Felipe Villanueva 10
 Guadalupe Inn,
 Alvaro Obregon, 01020
 PH: +52 55.55805618
 Email: info.cala@flir.com

www.flir.com
 NASDAQ: FLIR

Equipment described herein is subject to US export regulations and may require a license prior to export. Diversion contrary to US law is prohibited. Imagery for illustration purposes only. Specifications are subject to change without notice. ©2019 FLIR Systems, Inc. All rights reserved. Rev. 05/20/19

19-0582-SEC-ENT Ariel CM-3308 Datasheet



The World's Sixth Sense®